

RACE BRIEFING PNSW Marathon Series



#4 Brisbane Water Paddlers– Saturday 1st June 2024

Sponsored by Redback Project Services – see below for more information



We acknowledge and pay our respect to the Traditional Owners and Custodians of the land on which we are meeting, the Darkinjung People. We acknowledge the Aboriginal and Torres Strait Islander people who now reside in this area and their connection to the land, waters and community. We extend our respect to Elders – past and present – and future cultural knowledge holders.

The Darkinjung people lived here for at least 20,000 years. Their lands extend from the Hawkesbury River in the south to the Hunter River in the north, the Pacific Ocean in the east and to the Wollemi peaks in the west.

Welcome from the Brisbane Water Paddlers, hosts of Race 4.

BWP offer an interesting 5km course starting from Restella Ave Davistown heading south.

General Arrangements

- The Brisbane Water Paddlers event will operate from the reserve at Restella Ave Davistown
- Entries and details of the racing format will be on the Marathon PNSW website
- Food. We will not have food at the event.

The Little Tea Pot cafe in Davistown will be open at 7am for toasted sandwiches, bacon & egg rolls, coffees etc. Phone 4363 1261 and orders can be picked up on the way past or it's a short walk back from the event. Please allow time for preparation.

For Lunch the Davistown RSL Club is just around the corner. Would be nice to get together after so if you're interested please message me and I'll book a table (Gil 0407237651)

- Toilets are available at opposite side of the car park and women's toilets at the back of The Caspian Restaurant, these are accessible through the gate on Restella Ave.

On Arrival

- Please follow instructions of the parking attendants

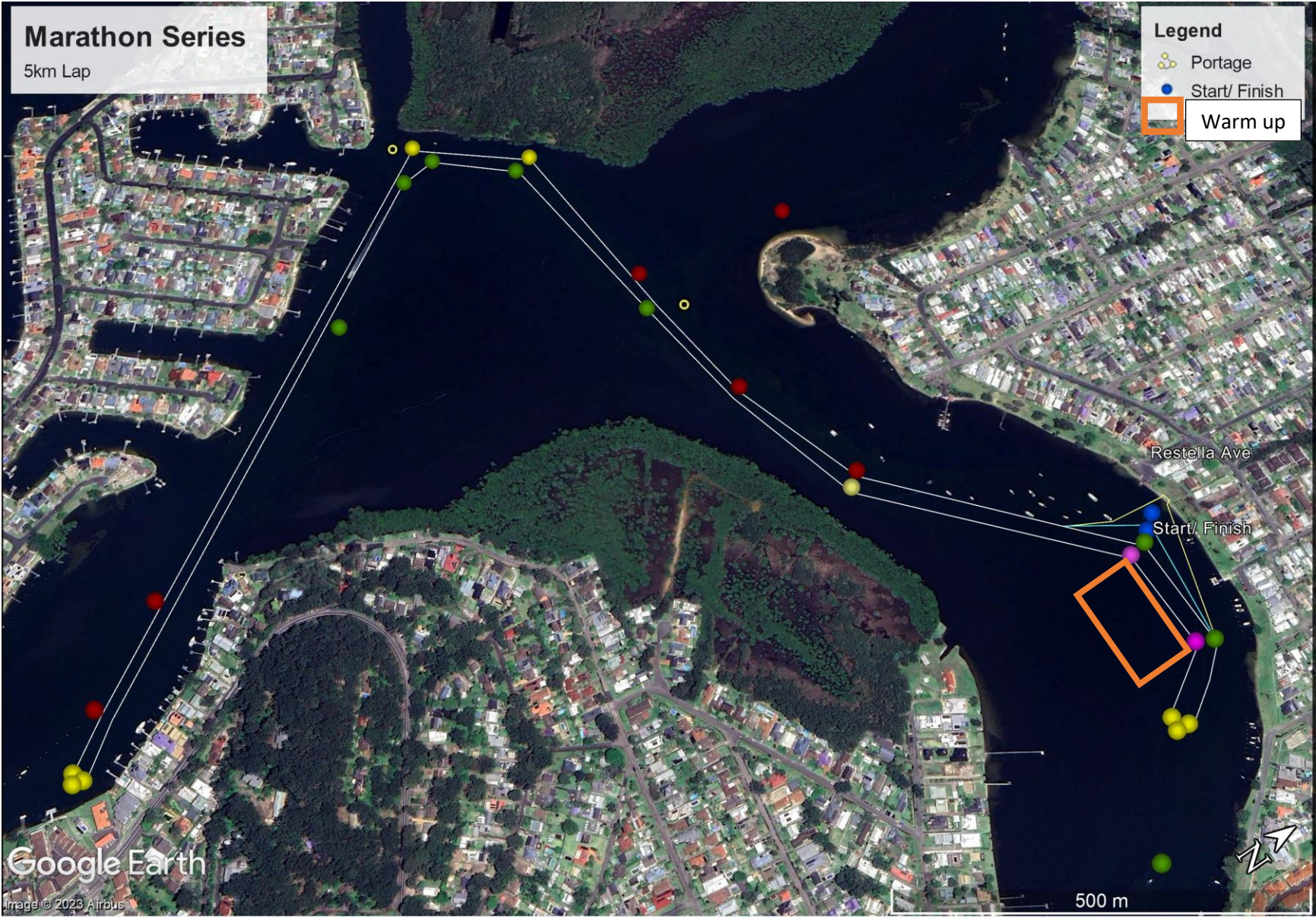
- BWP members will help you unload your boat before you go and park your car. There is no boat set up space available in the car park, however there is ample setup space on the nearby foreshore area.
- Complete Paddler Check-in and number collection:
 1. Check-in opens at 8am and CLOSES at 9:20am
 2. All paddlers must have checked in and collected their race numbers BEFORE 9:20am (otherwise you're not a confirmed starter and will not have a result recorded).

Race Safety

1. Lifejackets are compulsory for this event and a condition of the Aquatic License
2. All competitors are to render assistance for paddlers in difficulty
3. Three safety boats: one at each end, at the turns, and one in the middle of the course.
4. If assistance is required – wave paddle/hand in air – attract attention of safety boats and other paddlers.
5. The waterway is not closed to other boat traffic. Light traffic might be expected. The Ferry has right of way **YOU MUST ADJUST YOUR COURSE IF NECESSARY**. Follow Maritime rules.

The Course

- 5km laps
- Course below
- 2 black and white chequered buoys denote start/finish line.
- RMS navigation markers **do** form part of the course. Except two green channel markers (that can be seen from the start area), these two only are to be kept on your left in both directions and are marked on the map.
- Keep the Pink PNSW buoys on your RIGHT.
- Three yellow PNSW buoys at the turns, single yellow separation buoys on the course. ALL YELLOW buoys are to be kept on your LEFT.
- The portage is on the area near the start/finish line. When re-entering the water keep the yellow and black plastic buoy right to re-entry the course.
 1. 20km paddlers complete 4 x 5km laps
 2. 15km paddlers complete 3 x 5km laps
 3. 10km paddlers complete 2 x 5km laps
 4. 5km paddlers complete 1 x 5km lap



The Start

- First start 9:30 for Div 7 & 20km SUP, 9:45 for Div 6 and 15km SUP.
- Div 1 at 10am – then at Div 2,3,4,5,8,9,10,11,12,13 approximately 2–3-minute intervals thereafter.
- Warm up to the [east](#) of the starting line.
- Divisions will be ‘called up’ by the Aligner
- The Start line is in front of the PNSW marquee.
- Portage is compulsory for all Div 1 (unless medical exemption – ‘no advantage’ rules apply)
- Other divisions may optionally portage.
- Portage is completed after the 1st, 2nd and 3rd laps (before starting laps 2,3 and 4) near the start/finish line.

The Finish

- Finish line is between the black and white buoys in front of the PNSW marquee.
- When exiting the water be aware of paddlers completing the portage and finishing their race.
- Ensure your Race number is returned.
- There are no presentations all results will be online and emailed.

Brisbane Water Paddlers wish you good luck and a great day racing!

More about Redback Project Services:

Redback Project Services specialises in delivering quality audio visual and CCTV solutions in your corporate environment. From design, through to deployment we have the resources and experience to deliver your project for you on time and in budget. We service the entire east coast of Australia and would be happy to assist in your next corporate audio visual or CCTV installation project.

Redback Project Services – Installing trusted technologies in trusted environments

