

2023 Paddle NSW Harbour Racing Briefing

Event	Race#1 - The Pittwater Challenge
Location	Rowland Reserve, Pittwater Road, Bayview near the Boat Ramp
Event Date & Entry	Saturday 15 April 2023 ENTER HERE
Hosted By	Manly Warringah Kayak Club is proud to host the first race of the new 2023 Harbour Racing Series. More information here
Acknowledgement of Country	We meet on the traditional lands of Pittwater and the Northern Beaches area formerly known as Guringai country, the land of the Garigal or Caregal people.
Parking	This event is conducted at the same location as previous events. Please note the following and refer to the attached maps. Competitors are to drop-off their craft and park elsewhere. DO NOT cross Pittwater Road with your craft MAP 1. Please respect residents and keep noise to a minimum and do not park adjacent to the leash free dog park MAP 1. Ensure you have paid your parking until 11am.
Check-in Time and Race Briefing	7am to 8:15am: Race Check-in 7:50am: Onsite race briefing
Race Start Times	<p>8:25am Wave 1 – Long Course:</p> <ul style="list-style-type: none"> • Female: 50+ and older • Male: 60+ and older • All Juniors • All OC1 & 2, and Sea Kayak <p>8:35am Wave 2 – Long Course:</p> <ul style="list-style-type: none"> • Female: Open & 40+ • Male: Open, 40+, & 50+ • All Double Skis <p>8:38am Wave 3 - Short Course:</p> <ul style="list-style-type: none"> • All craft, all ages (including SUP)
Post-Race Presentation	A summary of the results and Race Medals will be presented after the race under the main marquee at Rowland Reserve.

Event	Race#1 - The Pittwater Challenge
HR Series Rules	Please familiarise yourself with the PNSW Harbour Racing Series Rules
Boat Numbers	Collect boat numbers from paddler check-in. Return boat numbers immediately after you finish paddling. You need to bring your own Race Number holder. These can be purchased when you register or at the event. Remove old HR Series stickers from your craft before you participate in this series.
Start List & Results	The Webscorer Start List and Results will be available progressively here
Course and Site Information	
Course Description See the attached course map(s).	<p>Long Course: see MAP 6</p> <p>Short Course: see MAP 7</p> <p>Remember:</p> <ul style="list-style-type: none"> You turn left around the pink buoys You turn right around yellow buoys The Finish Line will be between two black and white chequered buoys. If you see any of the safety boats wave a red flag on the course, the race has been stopped and you must proceed as directed by the safety boat.
Race Start Procedure	<p>You must pass between the two maroon MWKC flags on the beach when you enter the water. This is to check you have the minimum required equipment and to record your race number MAP 1. This is to check you have the minimum required equipment and to record your race number. Failure to enter through the designated entry gates will result in a DNS (Did Not Start) being applied. Gather for your race start in the area marked in orange on MAP 2 and wait to be called forward by one of the IRBs</p> <p>The Race Starter will:</p> <ol style="list-style-type: none"> Call the paddlers in the wave to make their way towards the start line Raise a green flag giving the paddlers in that wave a 1-minute warning to come up to (but not cross) the start line Signal race start by the dropping of the green flag and a single blast of an air horn. <p>DO NOT break the Start. You must remain behind the safety boat bringing your start to the start line. The safety boat will move to the yellow and black buoy at the start line (opposite the start boat). Anyone breaking the start will incur a 2 minute penalty.</p>

Event	Race#1 - The Pittwater Challenge
Weather and Tides	Paddlers should monitor the weather and water conditions and make their own decisions about their ability to handle the conditions.
Other Water Users/Hazards	<p>This event does not have exclusive use of the waterways. You MUST GIVE WAY to all other waterway users.</p> <p>DO NOT paddle through moored boats once you have started. Anyone noted doing this by race officials will be DSQ'd. The line of moored boats is out of bounds. The only exception to this is once you have returned through the Start Line at the Finish.</p> <p>See MAP 3</p>
Facilities	Toilets are available in the adjacent Rowland Reserve Car Park
Event Catering	A Coffee Van/Food Truck will be in attendance
Minimum safety Requirements	<p>Ensure you have the minimum safety equipment as per the Harbour Series Race Rules. No exceptions will be granted.</p> <ul style="list-style-type: none"> • All paddlers must wear a Level 50 or 50S non-inflatable lifejacket that conforms to Australian Standards. • One paddler of every Ski, Outrigger Canoe, Va'a or SUP must wear a leg leash at EVERY event. Paddle leashes or use of both paddle leash and leg leash together are not advised for Ski paddlers. <p>All kayak paddlers are advised to wear a spray-skirt and use a paddle leash. Kayaks must have bulkheads and sealed compartments to provide buoyancy.</p>
First Aid	A qualified First Aid Officer will be located near the Race Officials area. Additional first aiders will be located at various locations on the course.
Clothing	Stay sun smart. Slip, slop, slap, seek shade. Remember to hydrate.
COVIDsafe	The event will comply with NSW requirements. Don't paddle or come to this event if you're unwell, awaiting test results, are required to be isolating, etc. Please use err on the side of caution.
Emergency Muster Location	Adjacent to the Boat Ramp
Safety Vessels	NSW Marine Rescue Vessels will be in attendance clearly marked on the side of the boat with Volunteers dressed in a Blue Uniform; MWKC Course Safety Vessels will also be in attendance with Crew members dressed in High-Vis

Pittwater Challenge MAPS

MAP 1 – ARRIVAL / PARKING / CHECK-IN / WATER ENTRY



MAP 2 – START LINE PROCEDURE



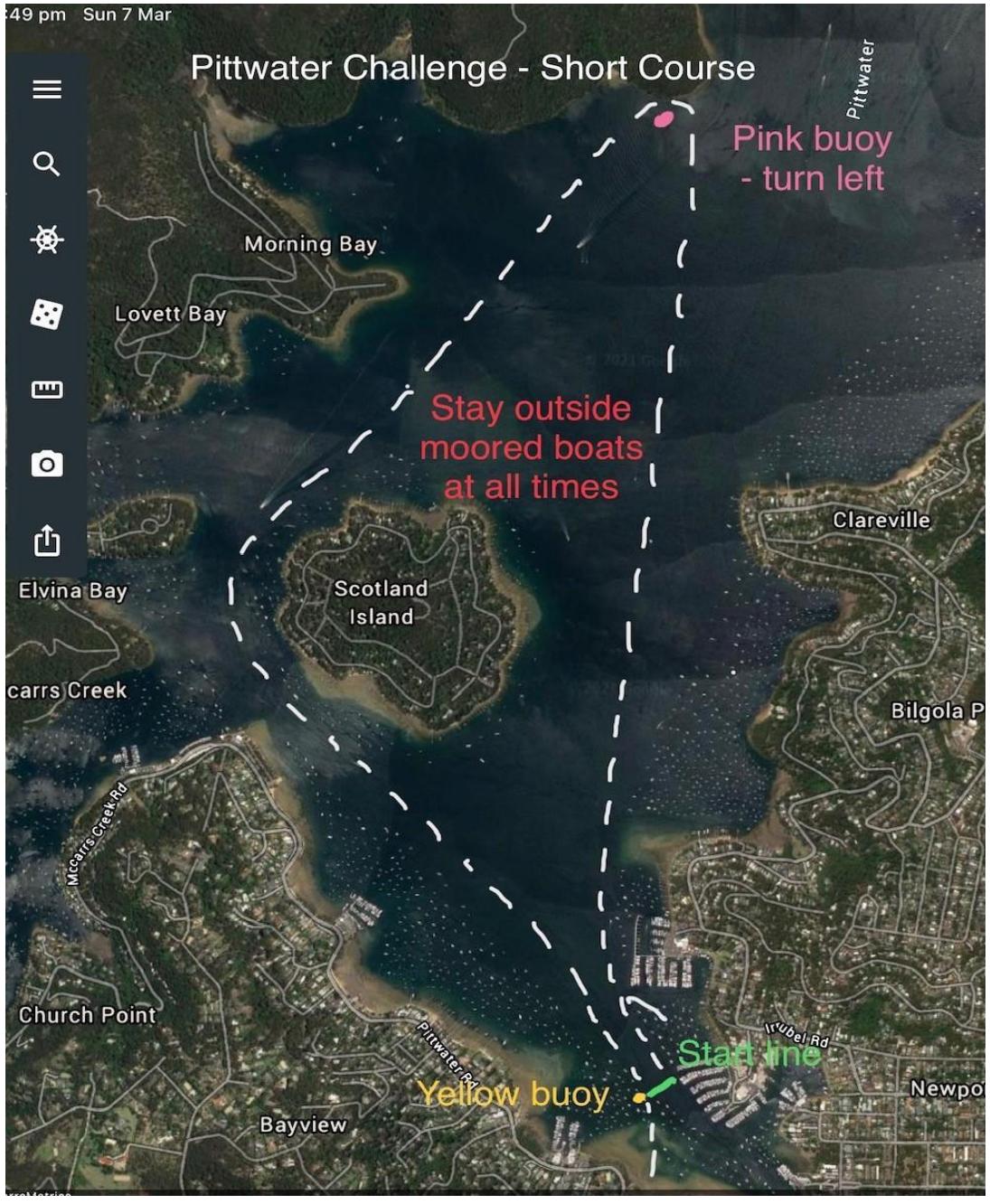
MAP 3 – FINISH LINE PROCEDURE



MAP 4 – MINIMUM PROGRESS CUTOFF



MAP 5 – SHORT COURSE



MAP 6 – LONG COURSE

